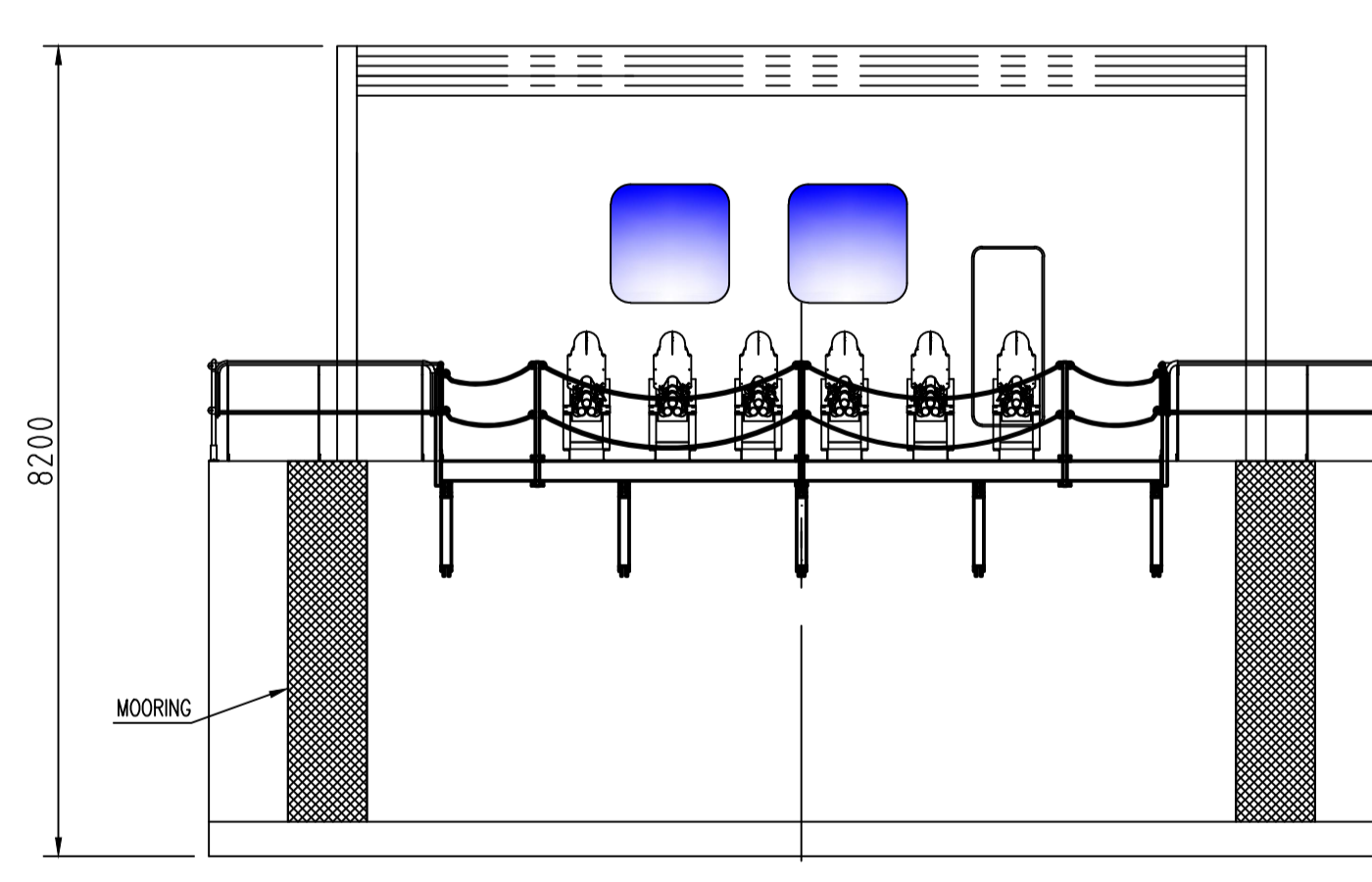
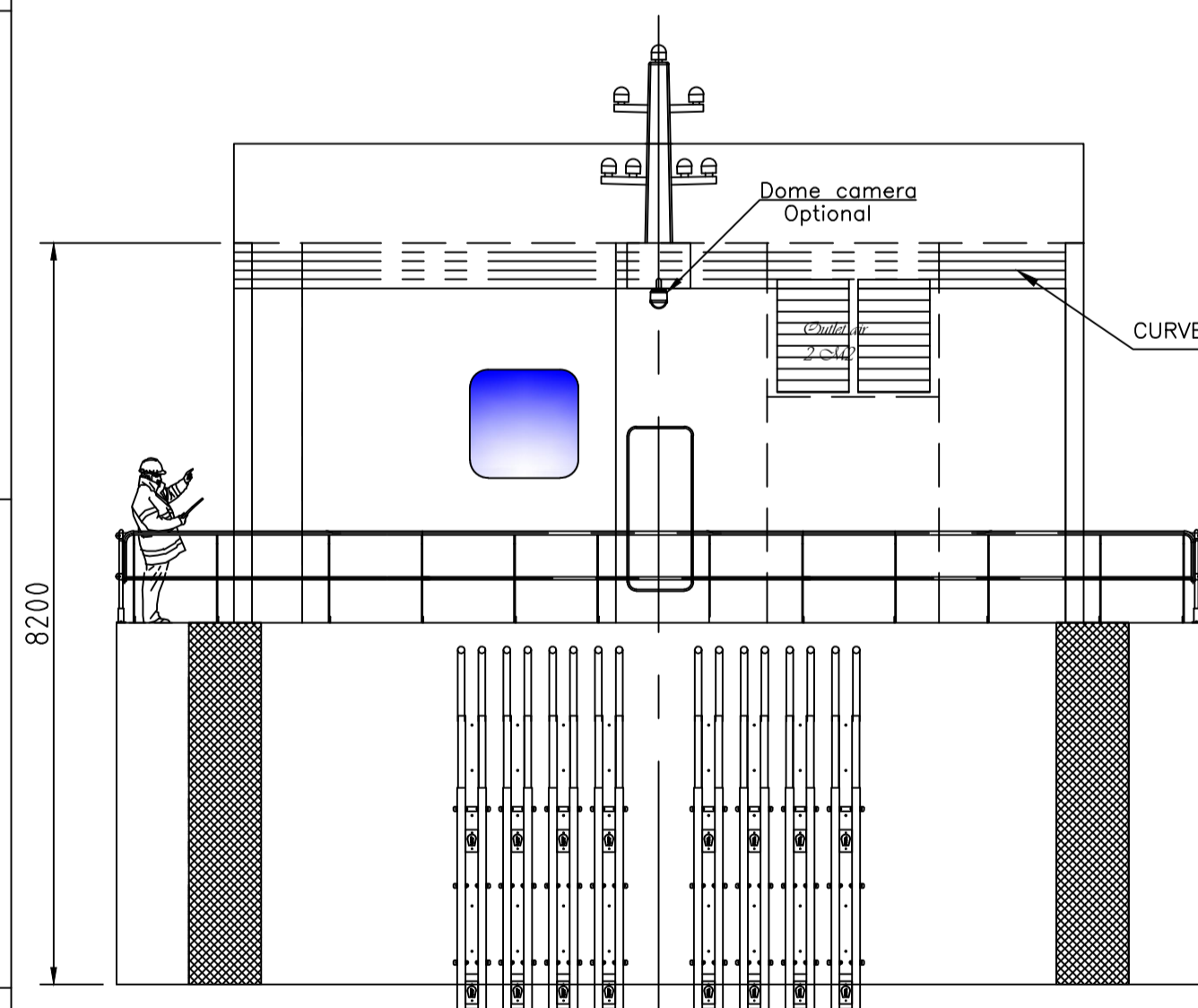


MAIN DIMENSION	
LENGTH:	18.83 METER
BREADTH:	12 METER
DEPT:	04 METER
DECK REF: 1200213.LX9M1	
SILO DECK:	
SILO CAPACITY:	
SILO QUANTITY:	04
SILO VOLUME:	Normal: 116m3/510 Max: 122m3/510
TANK CAPACITY:	
FUEL TANK:	20m3
ENSILAGE TANK:	20m3
ENSILAGE CUTTING TANK:	6m3
EQUIPMENT:	
2 x GENERATORS 160kW	
MAX 8 BLOWERS	



LOOKING FORWARD

LOOKING AFT

GENERAL:

1. ALL WORK TO BE PERFORMED ACCORDING TO GOOD WORKMANSHIP AND WITHIN RELEVANT LAWS AND REGULATION.
2. BARGE TO BE BUILT WITH AN ACCURACY LEVEL ACCORDING TO NS945, & TO THE SPECIFICATION FROM OWNER.
3. ALL NOTICES IN PROGRESS TO BE ISSUED.
4. FRAME THICKNESS DIRECTION IS FWD EXCEPTION WILL HAVE NOTICE.
5. ONLY CERTIFICATED MATERIALS TO BE USED.
6. ALL SHARP EDGES TO BE GRINDED R=5MM.

WELDING:

1. HULL PLATES TO BE BUTTWELDED WELDING FROM BOTH SIDES.
2. WATERIGHT BULKHEADS SHALL HAVE DOUBLE CONTINUOUS WELDS.
3. ALL WELDING TO BE PERFORMED BY APPROVED WELDERS WITH REQUIRED CERTIFICATES.
4. WELDS TO HAVE THE FOLLOWING MINIMUM SIZE UNDO. ON THE RELEVANT DRAWING:

FRAME TO:	WELD TYPE	SIZE
HULL PLATES	3/5	2/5
LONGITUDINAL BULKHEAD	3/3	2/3
TRANSVERSE BULKHEAD	3/5	2/5
DIESEL TANK Baffle	3/3	2/3
HULL PLATES TO MAN GRIDERS	4/4	4/4
OTHERS	4/4	4/4

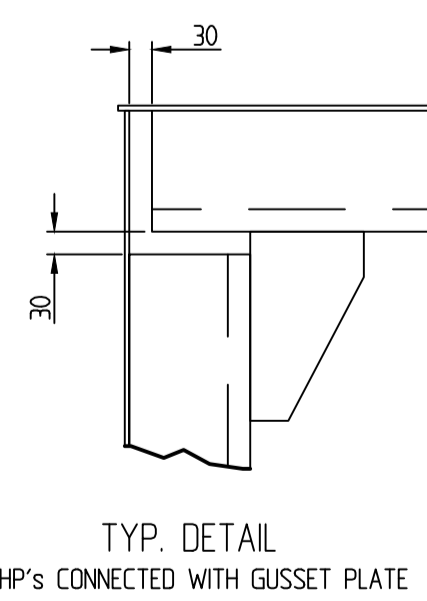
NOTE:

1. HULL NDE TO BE PERFORMED BY CERTIFIED OPERATORS AND APPROVED LAB.
2. ALL NDE TO BE DONE PRIOR TO PAINTING.
3. EXTENT:

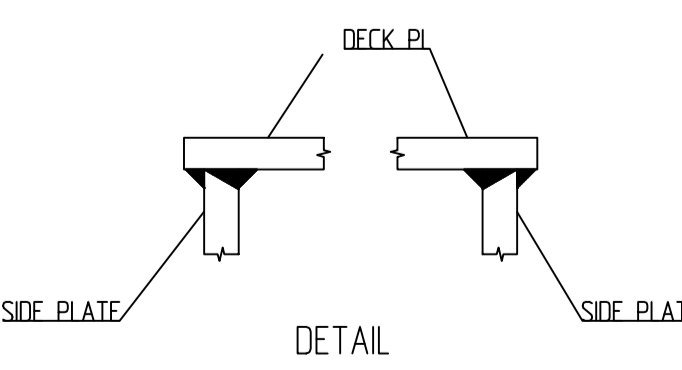
WELDS OF UNDERWATER PART OF SHELL PLATING: 2% UT or RT
WELDS OF UNDERWATER PART OF SHELL PLATING: 100% PT
CRANE PEDESTAL TO TOP PLATE AND CRANE FOUNDATION
WITH TOP PLATE: 100% MPI
TOWING EYES: 100% MPI
PULLERS: 20% MPI
ANCHOR SYSTEM: 20% MPI
VISUAL: 100%

SURFACE TREATMENT:

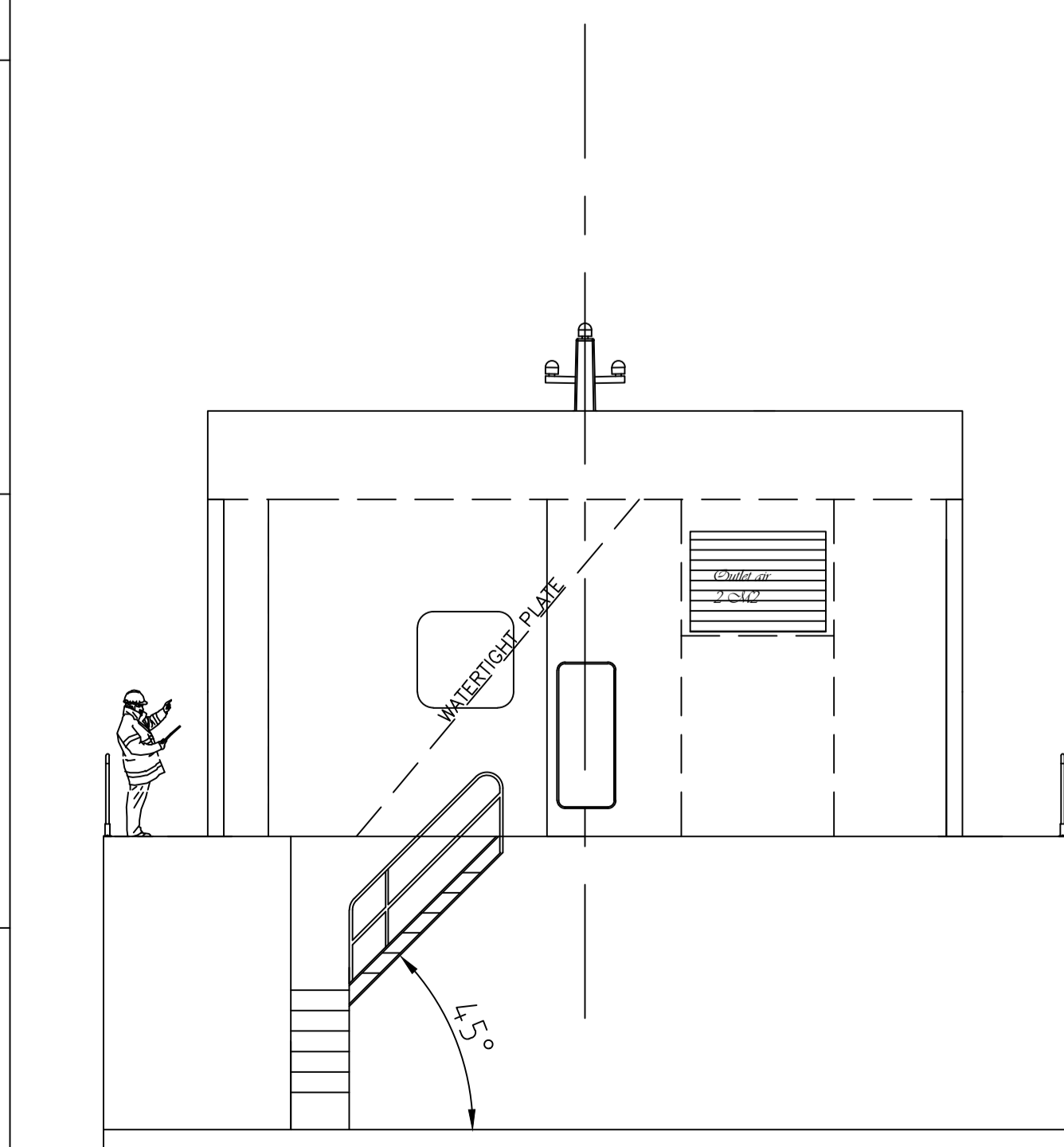
1. BARGE TO BE BUILT FROM PRIMED MATERIAL. ALL WELDS/CUTS TO BE TOUCHED UP WITH SIMILAR PRIMER QUALITY.
2. FOR SPECIFICATION OF SURFACE PROTECTION REFER TO SPECIFICATION FROM OWNER.



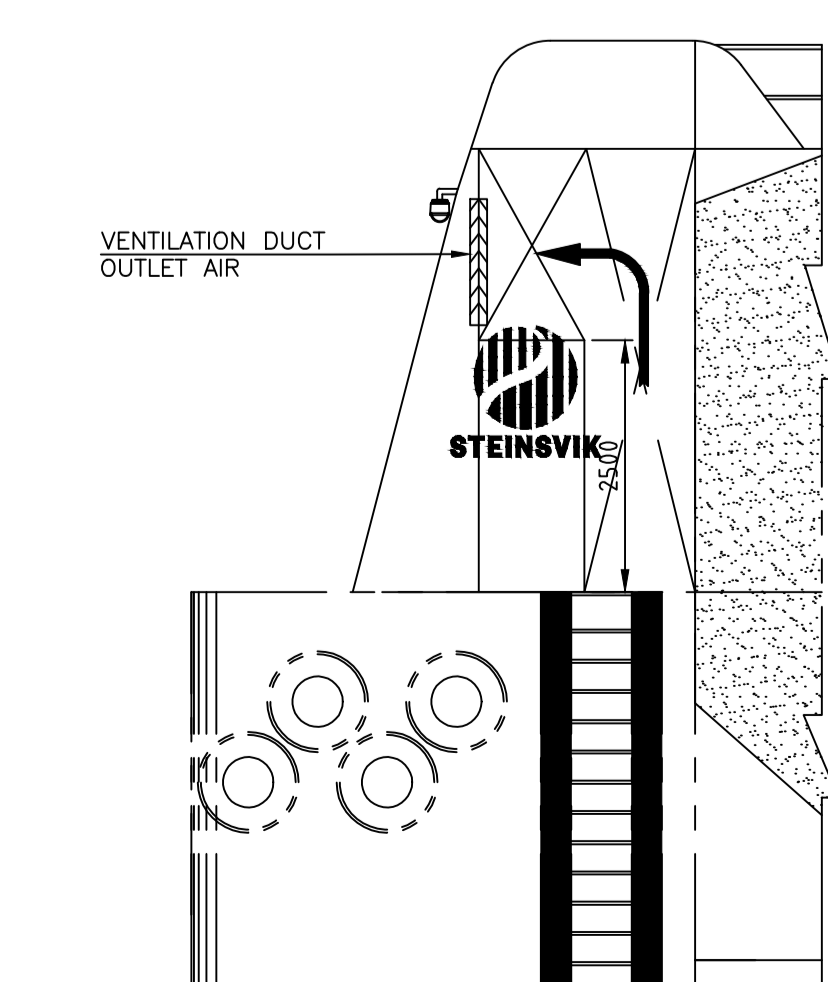
TYP. DETAIL HP'S CONNECTED WITH GUSSET PLATE



DETAIL UPPER CONNECTIONS BETWEEN DECK PLATE & SIDE PLATE



SECTION A



OUTLET AIR

REV	DATE	DESCRIPTION	PREPARED	CHECKED	APPROVED
A	28.02.2018	FOR PRODUCTION			

This document is the property of Steinsvik AS. This document and any authorized reproduction thereof, must not be used in any way against the interest of Steinsvik AS. Any authorized reproduction, in whole or in part, must include this legend.

	Steinsvik AS Rundhaug 25 Frakkagjerd 5563 Farresfjorden Norway	Scale: 1:75
		Sheet No: 1/1

Project: N300-3 SATELLITE GENERAL ARRANGEMENT
DRAWING No: N300S-F-101-001
Rev. No: A